

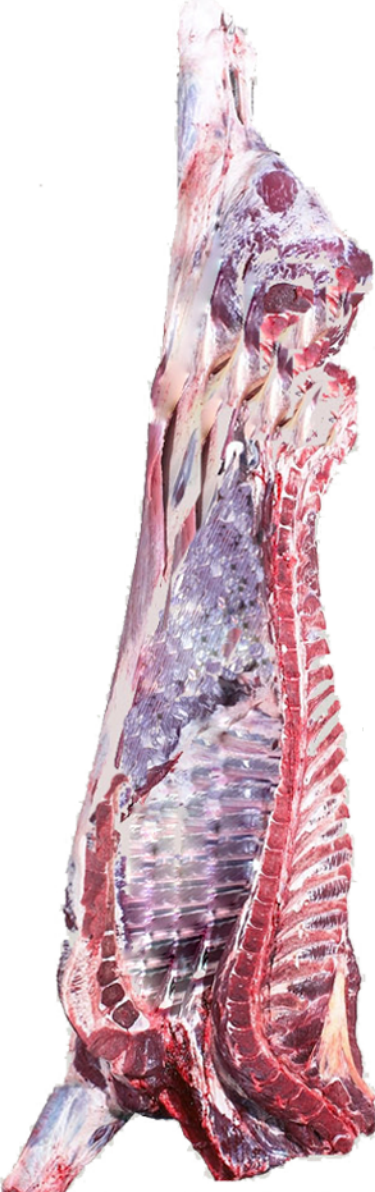


# ELCABEZO

MEAT CENTER



## VEAL PIECES - CUTTING BEEF



WHOLE CARCESSE  
350KG (APPROX.)



FOREQUARTERS



HINDQUARTERS



BEEF BALL



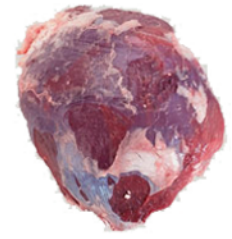
BACKBONE  
HIGH



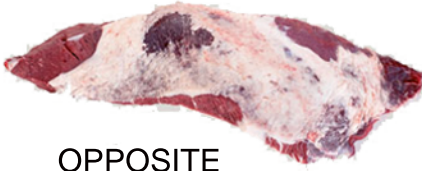
BACKBONE  
LOW



SHOULDER  
BLADE



LEG PIECE



OPPOSITE



SHOULDER  
PIECE



SHOULDER  
INSIDE



NECK AND BACK



ORBED



CAP



HIP



CHEST



SIRLOIN



BRISKET



SHOULDER  
OUTSIDE